

DATASHEET - 402 E WP VoIP TELEPHONE

TELEPHONE & INTERCOM COMMUNICATION EQUIPMENT



• Weather Proof total
IP66 / 67

DESCRIPTION - 402 E Range Weather Proof VoIP Telephone

The 402 E type VoIP telephone is design for critical/ the worst environments and meets industrial and offshore requirements. The GRP body with special reinforced treatment is designed to withstand most chemical and environmental hazards found on - or offshore.

The 402E range VoIP phone can integrated with different communication solutions. It can work as standard VoIP telephone (standard version with 10w amplifier) by connect to standard IPBX, or became intercom station of Public address & General alarm system (Digicom 3K Plus system), or master & slave intercom station of Global IP system, with Maxi 30w amplifier and local power.

MECHANICAL DATA

• Housing/Handset	GRP / Polyester carbon
• Handset cord:	Stainless steel 200kg resistance
• Mounting:	Wall or Pole
• Diameter	201 X 320 X 113 mm
• Cable Entry	2 x weather proof plastic cable Ø 5-12mm
• Connection	Inside screw connections or RJ45
• Weight	Approx. 2.3 kg
• Color	Black for back cover, orange for front cover

ELECTRICAL DATA

• Direct current supply:	12 / 24Vdc base on version or PoE
• Consumption:	Maxi 1A at 12 Vdc / 12W
• Audio Output:	10W or 30W Class D amplifier under HP 8 Ohms. handset, full duplex .
• Voice:	Management of the suppression of the local echo and the ambient noise.
• Electronic Bell:	84 to 92 dB @ 1M
• Hook:	Magnetic
• Conversation Mode:	By handset

ENVIRONMENT

• Ambient temperature during operation	-40 °C to + 70 °C
• Relative humidity (non - condensing)	Max. 95 %
• Degree of protection	IP66 or IP67
• Impact Rating (IK)	IK 10

ORDER NUMBER	DESCRIPTION
TLA 402 E1/P	SIP PoE phone with 14 aluminum type key buttons, handset.
TLA 402 E1/P24	SIP phone with 14 aluminum type key buttons, handset, Power supply 12 to 24 Vdc.
TLS 402 E2C9GL/P	SIP PoE phone with 14 aluminum type key buttons, handset and display
TLS 402 E2C9GL/P24	SIP phone with 14 aluminum type key buttons, handset, display, Power supply 12 to 24 Vdc.

DATASHEET - 402 E WP VoIP TELEPHONE

TELEPHONE & INTERCOM COMMUNICATION EQUIPMENT

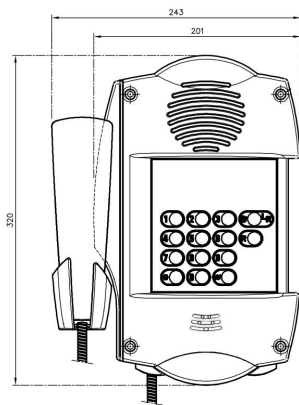


Fig. 1: Dimensional drawing TLA 402E1/P

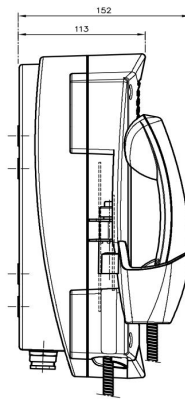


Fig. 2: Dimensional drawing TLS 402E2C9GL/P

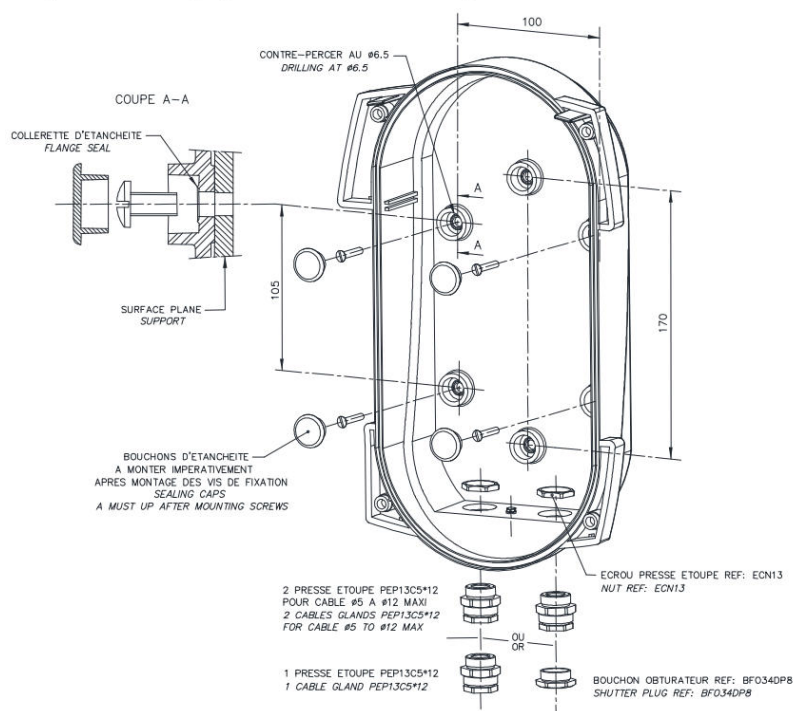


Fig. 3: Mounting drawing 402 type

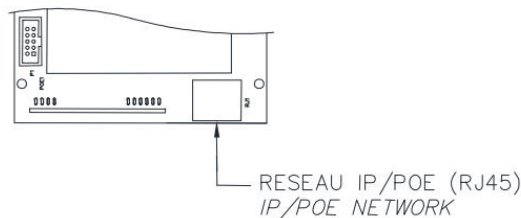


Fig. 4: Connecting drawing

DATASHEET - 402 E WP VoIP TELEPHONE

TELEPHONE & INTERCOM COMMUNICATION EQUIPMENT

TECHNICAL DATA

CODECS	<ul style="list-style-type: none"> G.711 ulaw, G.711 alaw, G.722 HD, G.726 (16kbps), G.726 (24kbps), G.726 fixed payload, G.729 G.726 (40kbps), DVI4 Narrowband, DVI4 HD, Linear PCM, Linear PCM HD, Linear PCM (little endian), Linear PCM HD (little endian), ILBC-30, ILBC-20, SPEEX Narrowband, SPEEX Wideband, SILK Narrowband, SILK Wideband.
FUNCTION	<ul style="list-style-type: none"> Caller ID. (For version with display.) General call and group calls (With or without SIP server LELAS). Conference (requires SIP server LELAS). Peer-to-Peer mode for making point-to-point calls without a server (IP addressing call). Direct call via programmable memory button for secondary stations (10 keys) (For version 402E2) Ringer volume control via Web. Timed break recall facility / Last number redial facility. Management of a strike by DTMF activation code. Report/transfer. Static Mode or DHCP or PPPoE Management of a strike by DTMF activation code. Embedded web server set-up: number of rings off-hook, max time on-line, HP volume, ringer and microphone, adding custom ringtones, option strikes, report / transfer number, IP address and Netmask, cascade dialling, direct call numbers, SIP settings, codecs, button press time (call taking, cancelling communication), adding three broadcast messages ...
POSSIBLE OPTION WITH SIP LELAS SERVER	<ul style="list-style-type: none"> Simultaneous calls depending on the server (from 30 to 60). Supports up to 500 SIP terminal registrations. Supports up to 32 participants in conference, invitation to a conference. 99 conference channels. Supports Static Queue Mode with different strategies (Simultaneous, Linear, Less Recent, Less Call, Random, Circular with Memory). Editable music broadcasting. Interception of calls. Voicemail, consultation with PIN. Interactive voice answering machine. DND call forwarding (Do not disturb, call forwarding if busy, if no answer, unconditional ...). Recording of communications (WAV format) saved on SD card.
SIP SERVER LANGUAGE	<ul style="list-style-type: none"> English, French, Chinese.

Installation, Operation and Maintenance Procedures

- Open the pivoting front panel removing the four screws
- Pass the cables through the cableglands being sure that the cable fit with the rubber gasket.
- Connect the telephone wires at the screw terminals
- Close the front panel in conformity to the safety rules for classified areas

This equipment is supplied with a 2 year warranty against defective workmanship



MAIN CONTACT : **TELEPHONES LE LAS** | ADDRESS: 99 RUE ALEXANDRE FOURNY, 94500 CHAMPIGNY - SUR-MARNE , FRANCE
 TEL: +33(0)1 48 76 62 62 | FAX: +33(0)1 48 76 83 04 | WEB: www.lelas.fr | E-Mail: lelas@lelas.fr

HEADQUARTER : 99 RUE ALEXANDRE FOURNY / 94500 CHAMPIGNY - SUR-MARNE / FRANCE

PLEASE REFER TO OUR WEBSITE, PLEASE NOTE THAT WHILST EFFORT HAS BEEN MADE TO ENSURE THE ACCURACY OF THIS DATASHEET. LE LAS WILL NOT ASSUME LIABILITY FOR THE USE THEREOF. LELAS RESERVES THE RIGHT TO IMPROVE SPECIFICATIONS WITHOUT PRIOR NOTICE, PLEASE REFER TO OUR WEBSITE FOR UPDATED INFORMATION OR CONTACT OUR LOCAL SALES REPRESENTATIVE.