

SIMPLIFIED INSTALLATION GUIDE

POST TELEPHONE

ATEX - GAS AND DUST

TYPE 229A1 / A2 II 2GD



THE GUARANTEE ONLY APPLIES WHERE THE PRODUCT IS INSTALLED AND OPERATED STRICTLY IN ACCORDANCE WITH INSTRUCTIONS AS DEFINED IN THIS MANUAL
NO GUARANTEE CAN BE INVOKED IN THE EVENT OF A DETERIORATION RESULTING FROM EXTERNAL FACTORS DUE TO LACK OF ADHERENCE TO

IMPORTANT

**CONSULT IMMEDIATELY THE INSTRUCTION MANUAL PROVIDED WITH THE APPLIANCE
BEFORE ANY INSTALLATION**

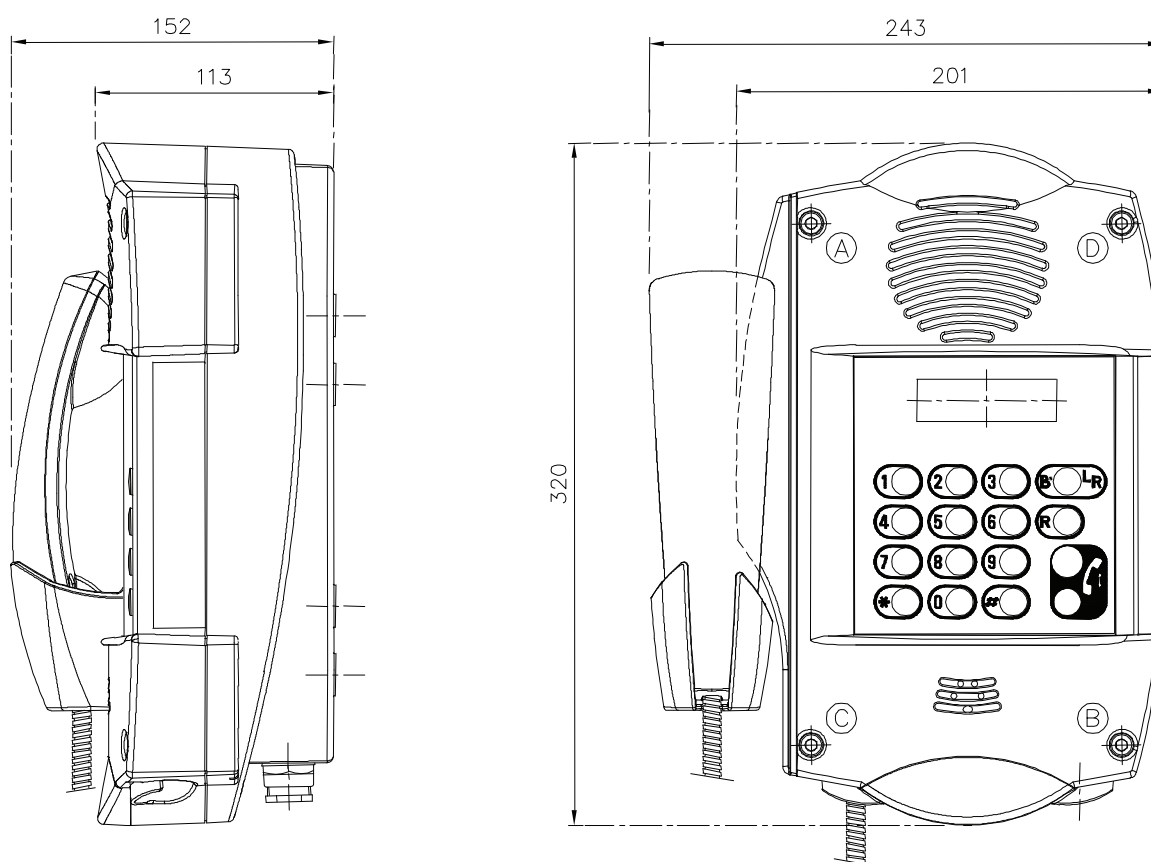
**THE FIRST COMMISSIONING MUST BE MADE BY A COMPETENT COMPANY FACILITY IN
AREA AT RISK.**

**ANY ACTION OR MODIFICATION OF THE UNIT
IS PERMITTED BY YOU WITHOUT PERMISSION FROM THE MANUFACTURER.**

INSTALLATION

DIMENSIONS OF TELEPHONE SET

NOTE: We strongly recommend the use of a cordless screwdriver set with a torque "medium / high" (5 Nm MAX), especially to close the case, in order to ensure uniform compression of the gasket sealing of the case in the order A B C D.



Prior disassembly before installation

To install and have access to the telephone system, unscrew the four mounting points of the front (ABCD)* using an ALLEN key diam.5 then remove the front case watching not to damage the components internal.

* ABCD: screwing order to follow when closing the front of the station to ensure optimum compression of the gasket.

- Get inside the plastic bag with the 4 sealing washers for fastening the box.
- Assemble the housing preferably on a flat surface.
- Comply with the assembly drawing below and the sealing washers Ø6 **must be** used.

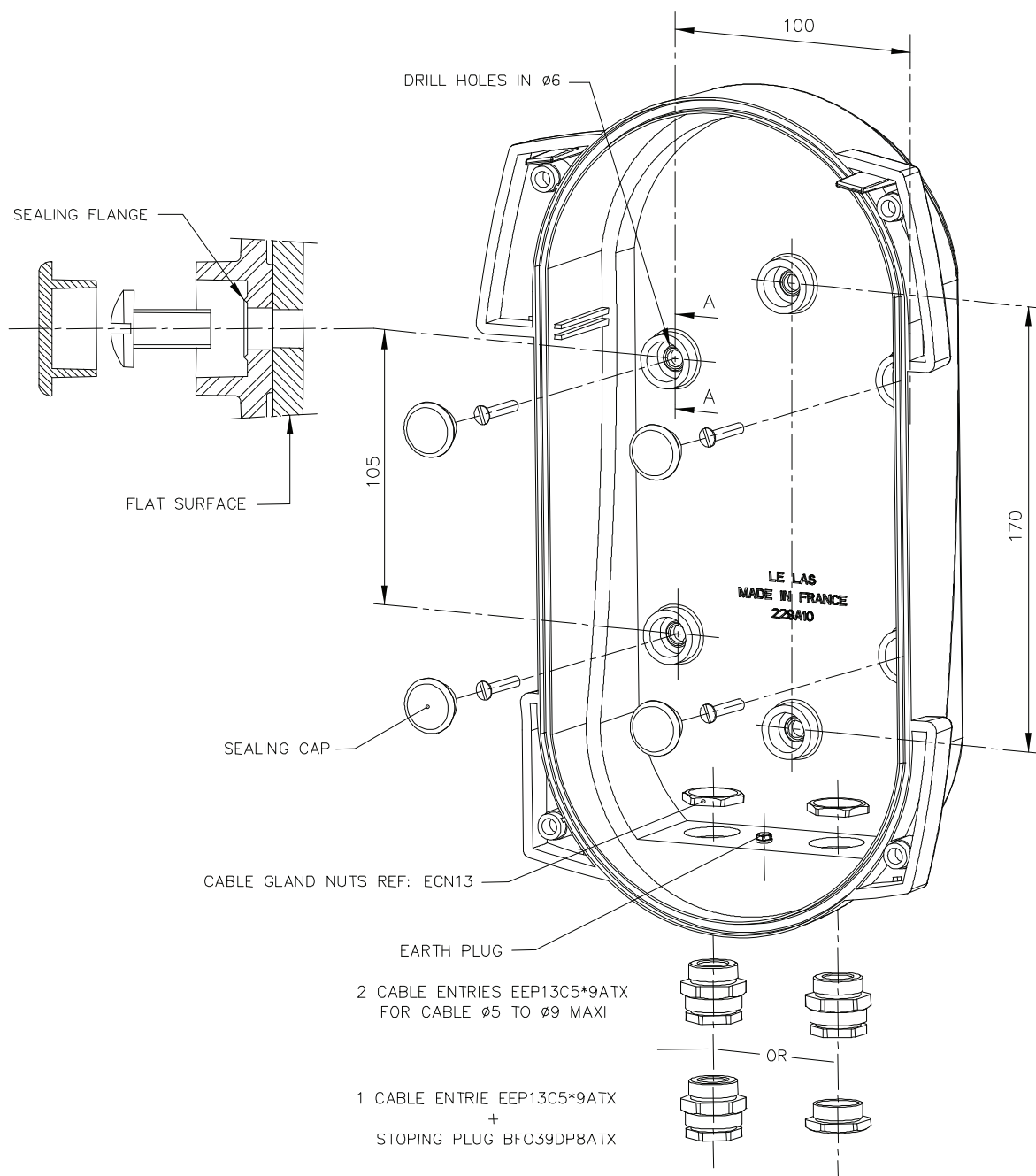
NOTE: We recommend the use of stainless steel screws with washers.

WALL MOUNT HOUSING

Wall mounting of the post can be done in 2 points (vertical axis 170mm) or in 4 points (105x100mm) on a flat surface.

- Drill locations chosen (2 or 4 holes) with the help of a Ø6 drill.
- Attach the box on a flat surface with Ø6 screws.
Tighten the screws to crush the sealing flange located at the bottom of the slots.
- Place the caps on the locations with screws.

Fit the sealing plugs in locations of the screws.

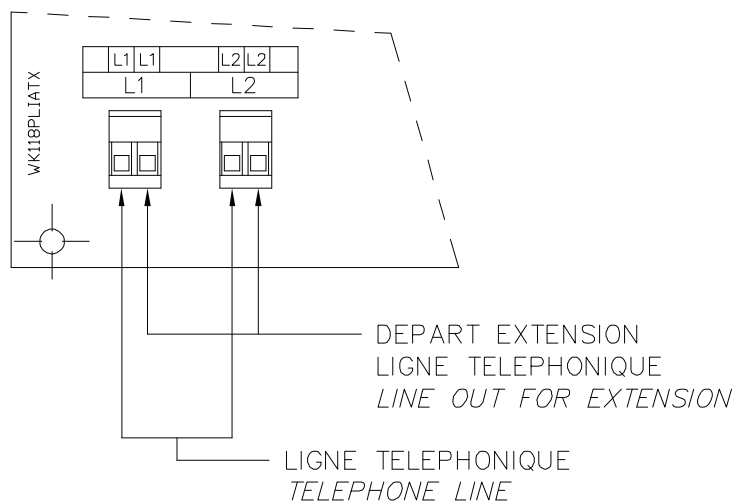


- Adjust cable diameters to the diameters of cable glands (Ø 5 to 9 Max) and tighten properly.

CONNECTION

Connecting the station to the telephone line is made on the card coated WK098PLIATX protection by intrinsic and lockable plug connector (for increased security).

Connect the telephone line terminals L1 and L2, which are doubled for easy extensions.
The connection terminals admit multiple or single wire with a maximum section of 1.5mm².



- Connect the telephone line terminals L1 and L2.
Connect ground.

Refit the front panel on the case ensuring put the two sides properly and tighten the 4 locking screws in the order A, B, C and D.

DOCUMENT A TELECHAGER / DOCUMENT TO DOWNLOAD

Download the programming and user guide for the phone card Ref: NFC205*CMA-ATX

