



Explosion proof Ex-M UAP LR Wi-Fi Access Point

Features

- ATEX Zone 2 and 22 version
- Indoor and outdoor use: IP66
- Long Range
- Unlimited scalability
- Dual band 2,4/5 GHz
- Cloud controlled system
- Intuitive software

 II 3G Ex ec IIC T4 Gc
 II 3D Ex tc IIIC T135°C Dc

Explosion proof wireless data transfer is here to stay

Today ATEX Wi-Fi infrastructure is a necessity for collecting data for (preventive) maintenance purposes, stock management and tracking personal movements in:

Food & Beverage industry (alcohol fumes, sugar and herbal ingredients), Warehouses (storage and handling of plant materials or chemicals), Oil & Gas refineries, Offshore industry, Pharmacy and Chemical industry

High performance in hazardous areas

Ex-Machinery offers explosion proof ATEX WI-FI infrastructure for safe and high performing wireless networks in ATEX zones. We offer ATEX converted Ubiquiti Unifi access points, suitable for ATEX zone 2 (gas explosive atmospheres) and ATEX zone 22 (dust explosive atmospheres)

Our ATEX experts modify state of the art access points from Ubiquiti Unifi to be ATEX compliant, and thus explosion proof. Other brands can be ATEX modified on request. So you can safely use your trusted access point in hazardous areas.

Explosion Safety Specifications (ATEX)

EU Directive	2014/34/EU (ATEX 114)
ATEX marking gas	II 3G Ex ec IIC T4 Gc
ATEX marking dust	II 3D Ex tc IIIC T135°C Dc
Applied standards	EN 60079-0, EN 60079-7, EN 60079-31

Explosion proof Ex-M UAP LR Wi-Fi Access Point

Explosion proof Wireless Connections for ATEX zone 2 or 22

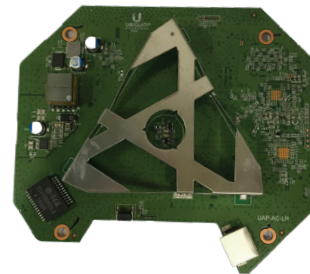


General Technical Specifications

Dimensions	H121 x W250 x D255 mm
Weight	2.5 Kilogram
Mounting	Wall or ceiling mount brackets
Networking Interface	(1) 10/100/1000 Ethernet Port
Buttons	Reset
Antennas	(1) Dual-Band Antenna, Tri Polarity, 2.4GHz, 6dBi
Wi-Fi Standards	802.11 a/b/g/n/ac
Power Method	24V, 0.5A Gigabit PoE Adapter (Pairs 4, 5+; 7,8 Return)
Power Supply	24V, 0.5A Gigabit PoE Adapter
Maximum Power Consumption	6.5W
Maximum TX Power	
2.4 GHz	24dBm
5GHz	22dBm
Operating Temperature	-10 to 70°C (14 to 158°F)



Ex-M UAP LR Wi-Fi Access Point and Junction Box



Innovative Triangular Antenna

Ideal for long-range deployments, the Ex-M UAP-LR Wi-Fi access point offers simultaneous, dual-band operation. The innovative triangular antenna design provides a long-range, symmetrical-link coverage area. The antenna gain of the Ex-M UAP-LR performs better than one-way, high transmit power does for connecting distant clients.

Explosion proof Ex-M UAP LR Wi-Fi Access Point

(1) **Unit Assessment Certificate**



(2) European Union Declaration of conformity for Group II Category 3D equipment in accordance with Directive 2014/34/EU Annex VIII.

(3) Document Number:

EX-M19ATEX2175X

(4) We, Ex-Machinery Explosion Proof Equipment B.V., Tinstraat 33, 2984 AN, Ridderkerk, The Netherlands herewith declare that:

(5) The apparatus: Zone 2/22 WiFi System
Consisting of: WiFi Access Point junction box and cable (POE supply outside hazardous area)
Converted to: II 3G ec IIC T4, II 3D IIIC T135°C
Type: Ex-M UAP-AC-LR 802.3af PoE,
Supply: 24 VDC, PoE, 12 Watt,
Quantity: 2 piece(s)
File: TCFWAP1.1
Serial No.: EX-M19405, EX-M19406

(6) is in conformity with the provisions of the following European Union directive, including the latest amendments, and with national legislation implementing this directive: 2014/34/EU; concerning equipment and protective systems intended for use in potentially explosive atmospheres

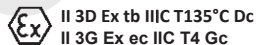
(7) and that the following harmonized standards have been applied in design and construction:

EN 60079-0:2009

EN 60079-31:2014

EN 60079-7:2015

(8) The marking of the apparatus includes the following:



(9) The apparatus in its basic version is originally manufactured by UBIQUITI NETWORKS with serial numbers: MAC: 1907K 18E8299C69E7-KrA4GI ; MAC: 1910G 18E829C61485-PkoV2M

(10) Assessment and conversion to explosion safe is carried out by: Ex-Machinery Explosion Proof Equipment B.V. Tinstraat 33, 2984 AN, Ridderkerk, The Netherlands.

(11) On behalf of: Client

(12) This declaration does not imply that the apparatus meets all statutory requirements in any particular industry and/or circumstance.

Ex-Machinery,

Ridderkerk, 11-11-2019

G.A. van Tienhoven M.Sc. Engineering
IECEX Competent Person



**IECEX Certificate
Personnel Competence**

(X) Special conditions for safe use are specified in the accompanying user manual of the equipment

THIS DECLARATION IS NOT A WARRANTY OF ATTRIBUTES WITHIN THE MEANING OF THE LAW CONCERNING PRODUCT LIABILITY. THE SAFETY INSTRUCTIONS GIVEN IN THE INSTALLATION MANUAL MUST BE OBSERVED. THE APPARATUS SHALL ONLY BE OPERATED UNDER THE CONDITIONS AS DESCRIBED IN THE USER MANUAL



Explosion proof **Ex-M UAP LR** Wi-Fi Access Point



Notes

A series of horizontal dotted lines for taking notes.