

# Dacon Rescue Frame

## Man-Over-Board Recovery System for smaller rescue crafts

### The Dacon Rescue Frame

#### General Arrangement

- A manual recovery system for gentle and effective rescue of casualties
- Quick, safe and effective retrieval saves time for the rescue personnel
- Folds for stowage on deck or railing. Always ready for immediate deployment
- Requires a minimum of space on board. Will not obstruct passage even on small rescue craft
- Doubles as an effective scrambling net for persons able to climb on board
- Established 20 years with a proven track record

#### Design

The Dacon Rescue Frame consists of a number of parallel fibre glass bars connected by slotted webbing.

The outer bar is equipped with flotation, a manoeuvring stick and hand-loops for easy grip.

#### Use

When deployed, the Rescue Frame hangs down the freeboard forming a cradle in the water.

The casualty is positioned in the cradle and gently «rolled» on board by lifting the grip bar or the retrieval lines.

#### Hydraulic Operation for shorthanded crew

With the optional hydraulic Drum and Davit, recovery can be performed single-handed.

#### For: Pilot vessels, tugs, Police, Coast Guard cutters etc.

- Available for any freeboard height.
- The system stows in a minimum of space.
- Simple, effective and inexpensive

#### Medical Aspects

- The person is recovered in a *horizontal position with full-length body support*. This will reduce the possibility of shock and aggravation of injuries associated with the recovery of hypothermic and seriously injured casualties from the water
- Detaches in seconds for use as an effective transport stretcher when required

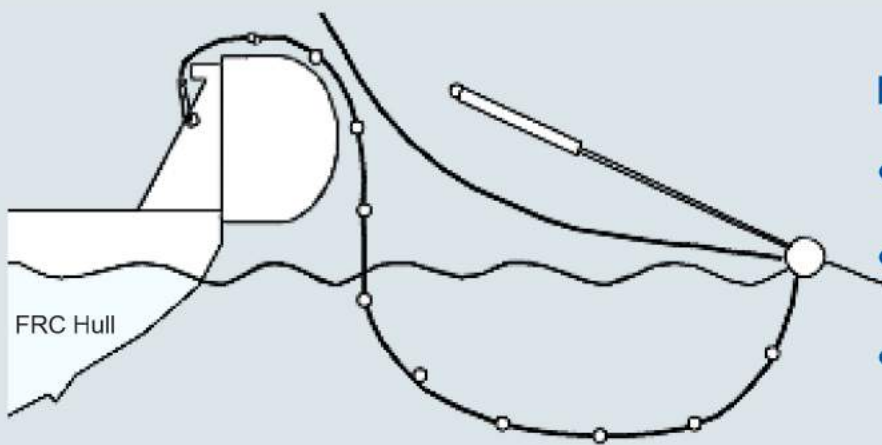


*Dacon Rescue Frame in use in Delta Force rib in Oslo*



# Dacon Rescue Frame

## Man-Over-Board Recovery System for smaller rescue crafts



Suggested installation on FRC

### Installation

- Adjustable length installation straps
- Easily installed on most boats with carabine hooks or similar
- Size: see selection chart for correct dimensions

### Dacon Rescue Frame, standard models

Freeboard height (approx.)	Dimensions horizontal x vertical					Vertical depth	Accessories v= included		
	Model RG-1,8 Horizontal Length 1,8m	Model RG-1,5 Horizontal Length 1,5m	Model RG-1,2 Horizontal Length 1,2m	Model RG-0,9 Horizontal Length 0,9m	Model RG-0,6 Horizontal Length 0,6m		Hauling line	Manoeuvring stick	Telescope stick (models 1,8, 1,5 and 1,2 only)
0,5 m	1,8x1,9 m	1,5x1,9 m	1,2x1,9 m	0,9x1,9 m	0,6x1,9 m	1,9 m		V	
0,6 m	1,8x2,1 m	1,5x2,1 m	1,2x2,1 m	0,9x2,1 m	0,6x2,1 m	2,1 m		V	
0,7 m	1,8x2,3 m	1,5x2,3 m	1,2x2,3 m	0,9x2,3 m	0,6x2,3 m	2,3 m		V	
0,8 m	1,8x2,5 m	1,5x2,5 m	1,2x2,5 m	0,9x2,5 m	0,6x2,5 m	2,5 m	V	V	
0,9 m	1,8x 2,7 m	1,5x 2,7 m	1,2x 2,7 m	0,9x 2,7 m	0,6x 2,7 m	2,7 m	V		V
1,2 m	1,8x3,1 m	1,5x3,1 m	1,2x3,1 m	0,9x3,1 m	0,6x3,1 m	3,1 m	V		V
1,5 m	1,8x3,5 m	1,5x3,5 m	1,2x3,5 m	0,9x3,5 m	0,6x3,5 m	3,5 m	V		V
1,7 m	1,8x3,9 m	1,5x3,9 m	1,2x3,9 m	0,9x3,9 m	0,6x3,9 m	3,9 m	V		V
2,0 m	1,8x4,2 m	1,5x4,2 m	1,2x4,2 m	0,9x4,2 m	0,6x4,2 m	4,2 m	V		V
2,2 m	1,8x4,6 m	1,5x4,6 m	1,2x4,6 m	0,9x4,6 m	0,6x4,6 m	4,6 m	V		V
2,5 m	1,8x5,0 m	1,5x5,0 m	1,2x5,0 m	0,9x5,0 m	0,6x5,0 m	5 m	V		V
2,8 m	1,8x5,4 m	1,5x5,4 m	1,2x5,4 m	0,9x5,4 m	0,6x5,4 m	5,4 m	V		
3,1 m	1,8x5,8 m	1,5x5,8 m	1,2x5,8 m	0,9x5,8 m	0,6x5,8 m	5,8 m	V		
3,8 m	1,8x 6,8 m	1,5x 6,8 m	1,2x 6,8 m	0,9x 6,8 m	0,6x 6,8 m	6,8 m	V		

### Specifications

The Rescue Frame is currently offered in sizes to fit craft with freeboard from 0,5 - 6m.

Length: Standard 180 cm (0,6 - 1,8m available)

Depth: 1,8m - 6m

Weight: 3 kg/m<sup>2</sup>

### Materials

Rods: GRP  
 Webbing: Polyester  
 Fittings: Stainless steel  
 Rope: Polyester  
 Flotation: Expanded PP

